

# UCoustic™

## 7250 700w soundproof wall box

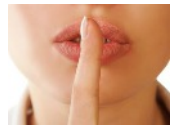


## Superior sound attenuation wall boxes

With cooling ability up to 1.5kW

Product overview and technical data





## Overview

### 7250-SP 700 wide **sound proof** wall box

As many office based servers, active equipment and their related cooling apparatus become more powerful to sustain the demands we make from them, they are inevitably becoming noisier in the process. These background noises can lead to an impractical office working environment and they also run the risk of being in breach of EEC guidelines if too loud. The UCoustic 7250-SP and 7210-SP sound proof ranges continue the tradition of quality, style and innovation associated with the USystems repertoire of intelligently designed products.

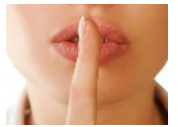
- Rigid bolted construction
- 700mm width enables superior cabling
- Up to 15dB noise attenuation
- Up to 1.5kW of heat dissipation
- Additional top & bottom plenum chambers for greater noise reduction
- Multi cable access through the lid and base with soundproof cable entry
- Front and rear mounting angles
- Lockable easy access side panels
- One key fits all locks
- 250kg weight loading (distributed evenly)
- Quick release cladding with high quality soundproof foam
- Left or right hand hinged front door
- Versatile

Available in 12U, 18U and 21U heights, 600 deep and 700 wide, the 7250-SP soundproof wall box is ideal for installations which don't require the same level of enhanced noise reduction and cooling as the UCoustic 9210 cabinet.

**UP TO 15db NOISE ATTENUATION**

**UP TO 1.5kW OF COOLING** with additional fans

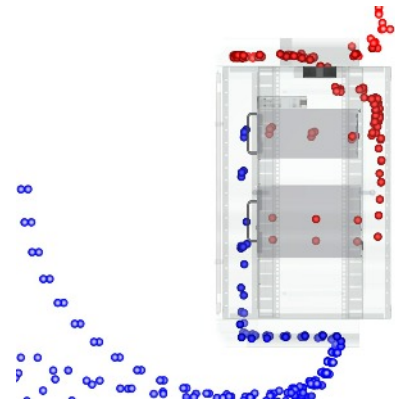




## Standard specification

### 7250-SP 700w sound proof wall box

Comprising of 4 corner posts, lid and base inclusive of front and rear mounting angles, assembled with Tough Torque™ fixings, lockable front solid steel door, lockable side access panels, vented and cable entry top and bottom cover, assembled fully configured, finished in Black RAL 9005



Airflow path on a 7250-SP including baffles

#### Available in 1 width, 1 depth and 3 heights

Usable height	12U	18U	21U
External height	630mm	897mm	1125mm
700 wide	✓	✓	✓
600 deep	✓	✓	✓
Actual depth	600mm	600mm	600mm
Maximum usable depth	480mm	480mm	480mm



21U 7250-SP soundproof wall box

#### Materials and finish

Basic framework - 1.5mm CR4 steel  
 Corner posts - 1.2mm & 1.5mm CR4 steel  
 Steel doors - 1.2mm CR4 steel  
 Side panels - 1.0mm & 1.2mm CR4 steel  
 FT80 soundproof foam  
 FT-60 solvent free adhesive scrim backing

Textured powder coat Black RAL 9005

(Other colour options are available on request)



Hanging bracket and soundproof foam (for use on uneven walls)

